

The
BLOOMFIELD
 OFFERING 4 EXTERIOR STYLE OPTIONS



BLOOMFIELD MODERN FARMHOUSE



BLOOMFIELD AMERICAN TRADITION



BLOOMFIELD CRAFTSMAN

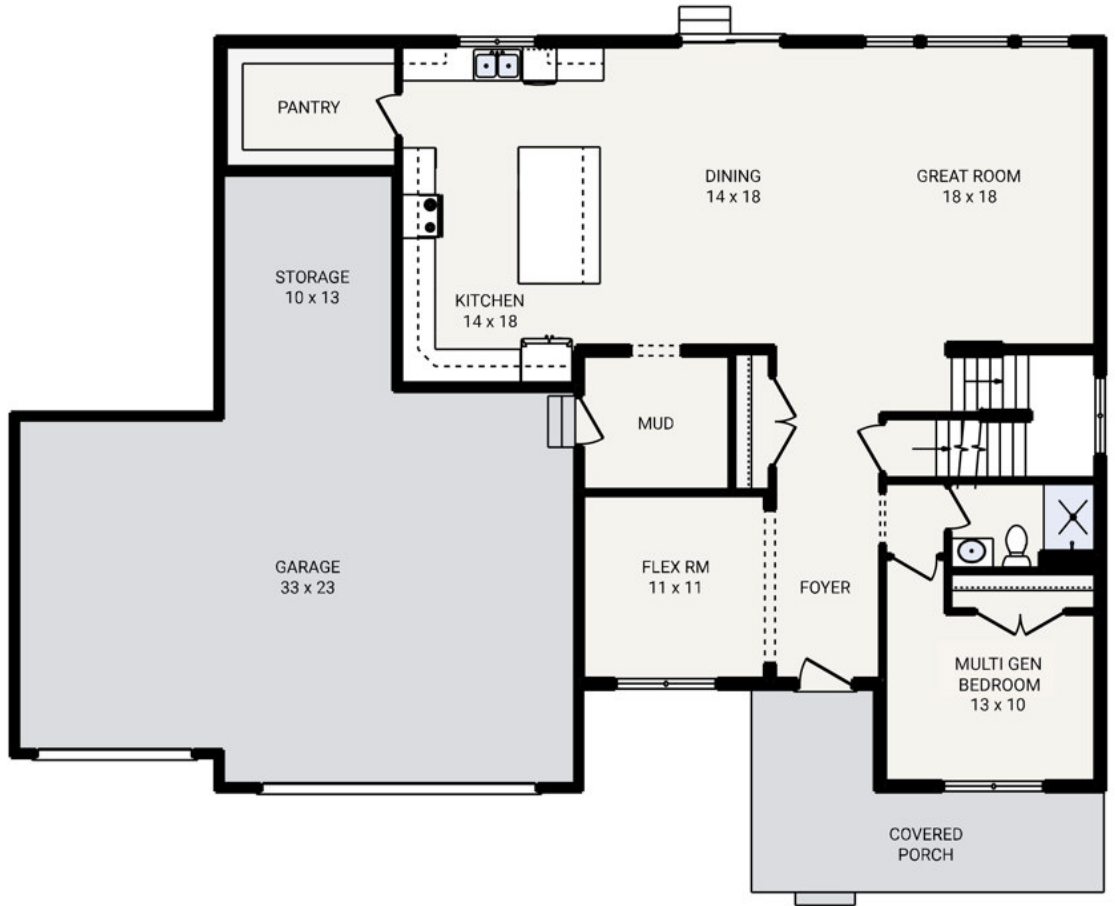


BLOOMFIELD FRENCH COUNTRY

| | |
|------------------|-----------------|
| Bedrooms | 5 |
| Bathrooms | 4.0 |
| Starting Sq. Ft. | 3353 |
| Footprint | 64 ft. x 50 ft. |
| Garage | Included |

© Copyright 1992-2024 Schumacher Homes. All rights reserved. Changes and modifications to floorplans, materials, and specifications may be made without notice. Square Footages will vary between elevations specific to plan and exterior material differences. Some items pictured or illustrated are optional and are an additional cost. Dimensions are approximate. Illustrations are artist renderings only.

The
BLOOMFIELD



| | |
|------------------|-----------------|
| Bedrooms | 5 |
| Bathrooms | 4.0 |
| Starting Sq. Ft. | 3353 |
| Footprint | 64 ft. x 50 ft. |
| Garage | Included |

© Copyright 1992-2024 Schumacher Homes. All rights reserved. Changes and modifications to floorplans, materials, and specifications may be made without notice. Square Footages will vary between elevations specific to plan and exterior material differences. Some items pictured or illustrated are optional and are an additional cost. Dimensions are approximate. Illustrations are artist renderings only.

The
BLOOMFIELD



| | |
|------------------|-----------------|
| Bedrooms | 5 |
| Bathrooms | 4.0 |
| Starting Sq. Ft. | 3353 |
| Footprint | 64 ft. x 50 ft. |
| Garage | Included |

© Copyright 1992-2024 Schumacher Homes. All rights reserved. Changes and modifications to floorplans, materials, and specifications may be made without notice. Square Footages will vary between elevations specific to plan and exterior material differences. Some items pictured or illustrated are optional and are an additional cost. Dimensions are approximate. Illustrations are artist renderings only.