

The
WEST POINT
 OFFERING 2 EXTERIOR STYLE OPTIONS



WEST POINT CRAFTSMAN

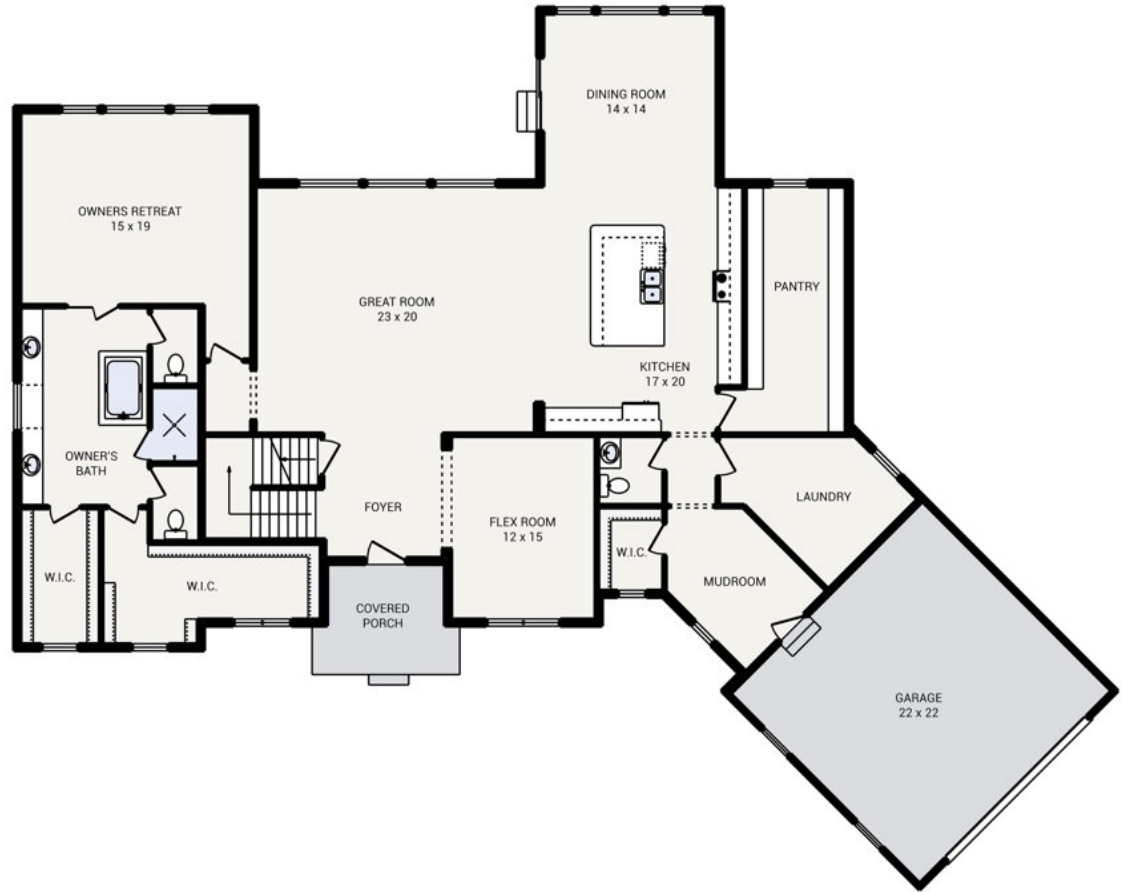


WEST POINT AMERICAN TRADITION

Bedrooms	4
Bathrooms	3.5
Starting Sq. Ft.	3718
Footprint	90 ft. x 68 ft.
Garage	Included

© Copyright 1992-2024 Schumacher Homes. All rights reserved. Changes and modifications to floorplans, materials, and specifications may be made without notice. Square Footages will vary between elevations specific to plan and exterior material differences. Some items pictured or illustrated are optional and are an additional cost. Dimensions are approximate. Illustrations are artist renderings only.

The
WEST POINT



Bedrooms	4
Bathrooms	3.5
Starting Sq. Ft.	3718
Footprint	90 ft. x 68 ft.
Garage	Included

© Copyright 1992-2024 Schumacher Homes. All rights reserved. Changes and modifications to floorplans, materials, and specifications may be made without notice. Square Footages will vary between elevations specific to plan and exterior material differences. Some items pictured or illustrated are optional and are an additional cost. Dimensions are approximate. Illustrations are artist renderings only.

The
WEST POINT



Bedrooms	4
Bathrooms	3.5
Starting Sq. Ft.	3718
Footprint	90 ft. x 68 ft.
Garage	Included

© Copyright 1992-2024 Schumacher Homes. All rights reserved. Changes and modifications to floorplans, materials, and specifications may be made without notice. Square Footages will vary between elevations specific to plan and exterior material differences. Some items pictured or illustrated are optional and are an additional cost. Dimensions are approximate. Illustrations are artist renderings only.